



LONEHILL MANOR RETIREMENT ESTATE

2 Bedroom Apartment

From:
R1 950 000

**Rental Option
Available**

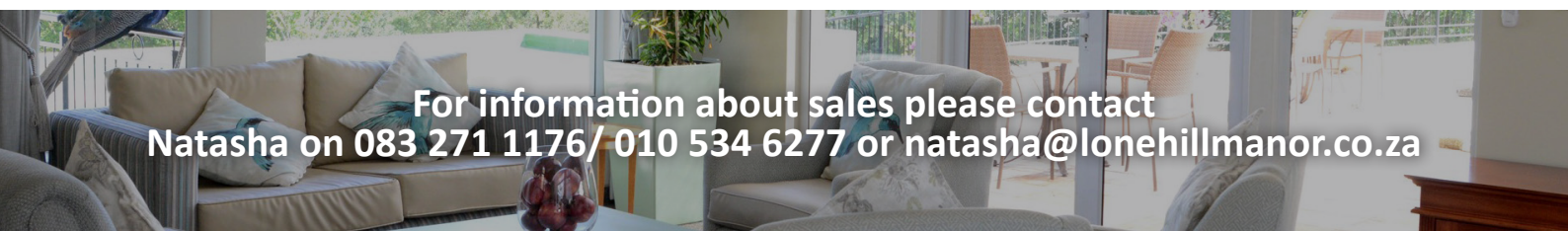
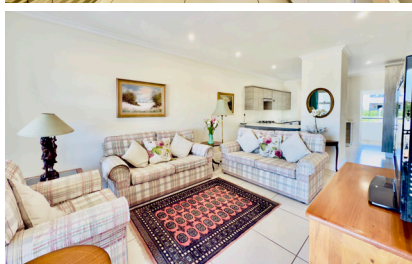
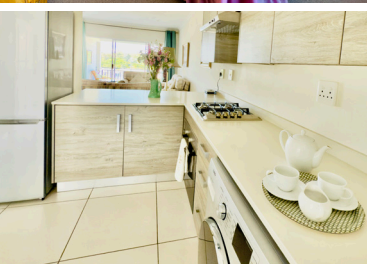
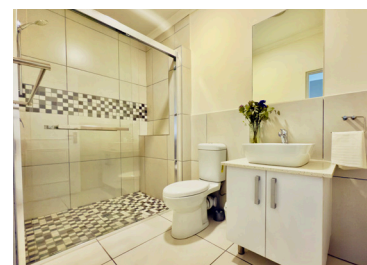
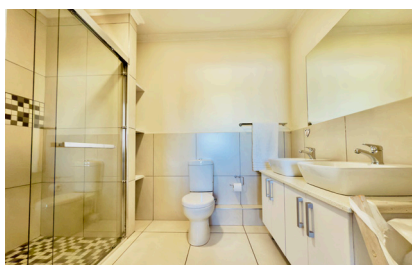
Type: 2 Bedroom Apartment

Approx. Size: 89m²

- ✓ 2 Bedroom
- ✓ Open plan kitchen
- ✓ Open plan lounge / dining room
- ✓ Covered carport
- ✓ 2 Bathrooms
- ✓ Covered patio



Please note: Prospective purchasers should inspect the property personally to confirm that the information set out herein, is correct. Whilst every care has been taken in the preparation of this information, Jedd Realty and its staff cannot be held responsible for any omissions/insertions or errors which may occur.



For information about sales please contact
Natasha on 083 271 1176/ 010 534 6277 or natasha@lonehillmanor.co.za