



LONEHILL MANOR

RETIREMENT ESTATE

1 Bedroom Apartment

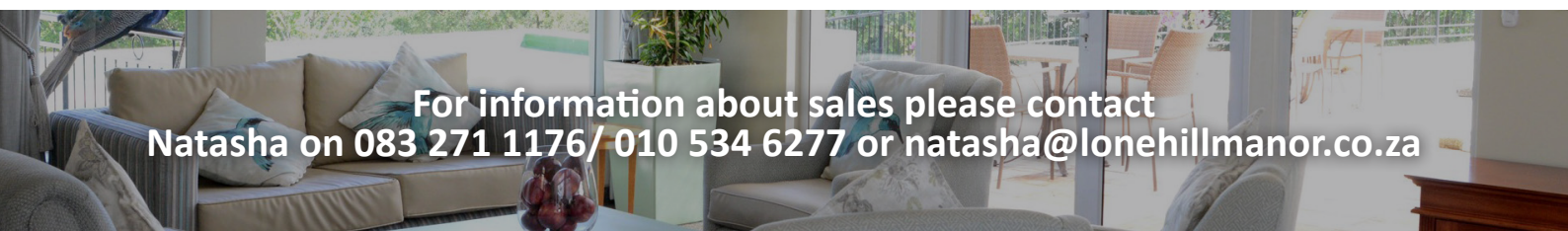
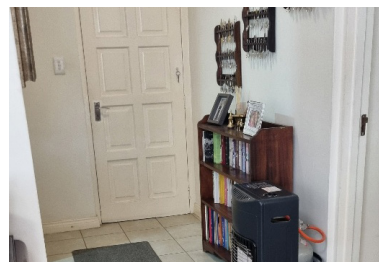
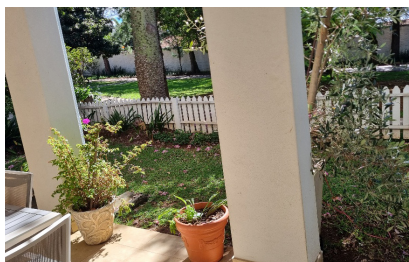
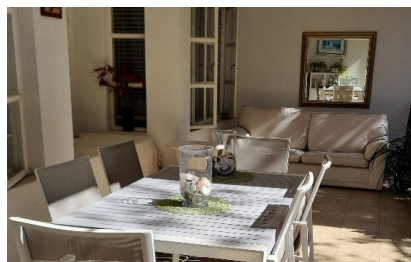
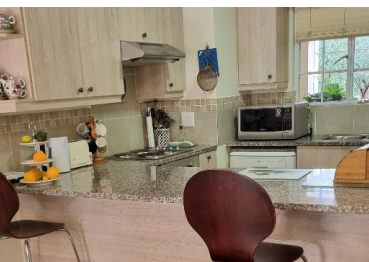
Asking Price:
R1 550 000

Type: 1 Bedroom Apartment Approx. Size: 107m²

- ✓ 1 Bedroom
- ✓ 1 Bathroom
- ✓ Kitchen
- ✓ Open plan living room
- ✓ Covered patio



Please note: Prospective purchasers should inspect the property personally to confirm that the information set out herein, is correct. Whilst every care has been taken in the preparation of this information, Jedd Realty and its staff cannot be held responsible for any omissions/insertions or errors which may occur.



For information about sales please contact
Natasha on 083 271 1176/ 010 534 6277 or natasha@lonehillmanor.co.za